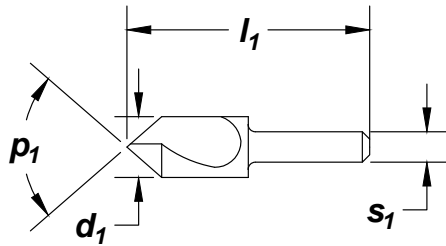


## Style: 10001

## Single Flute Countersink

**Note**  
Operating parameters:  
See Technical section



**HSS** **Surface Treatment**



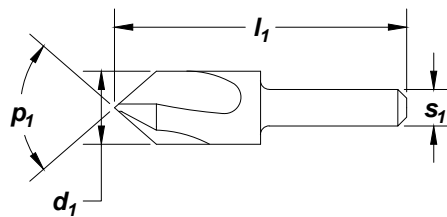
Countersink

High Speed Steel

tool diameter d <sub>1</sub> (in)		shank diameter		overall length		p <sub>1</sub> order number - 10001				
fraction	decimal	s <sub>1</sub> (in)	l <sub>1</sub> (in)	60° angle	82° angle	90° angle	100° angle	120° angle		
1/4	.2500	.188	1.500	C46101	C46102	C46103	C46104	C46106		
3/8	.3750	.250	1.750	C46107	C46108	C46109	C46110	C46112		
1/2	.5000	.250	2.000	C46113	C46114	C46115	C46116	C46118		
5/8	.6250	.375	2.250	C46119	C46120	C46121	C46122	C46123		
3/4	.7500	.500	2.625	C46124	C46125	C46126	C46127	C46129		
1	1.0000	.500	2.750	C46130	C46131	C46132	C46133	C46135		
1-1/4	1.2500	.500	2.750	C46136	C46137	C46138	-	-		
1-1/2	1.5000	.750	2.875	C46141	C46139	C46140	-	-		
2	2.0000	.750	3.250	C46142	-	C46143	-	-		

## Style: 10003

## 3 Flute Countersink



**HSS** **Surface Treatment**



tool diameter d <sub>1</sub>		shank diameter		overall length		p <sub>1</sub> order number - 10003				
fraction	decimal	s <sub>1</sub> (in)	l <sub>1</sub> (in)	60° angle	82° angle	90° angle	100° angle	120° angle		
1/4	.2500	.188	1.500	C46150	C46151	C46152	C46153	C46155		
3/8	.3750	.250	1.750	C46156	C46157	C46158	C46159	C46161		
1/2	.5000	.250	2.000	C46162	C46163	C46164	C46165	C46167		
5/8	.6250	.375	2.250	C46168	C46169	C46170	C46171	C46173		
3/4	.7500	.500	2.625	C46174	C46175	C46176	C46177	C46179		
1	1.0000	.500	2.750	C46180	C46181	C46182	C46183	C46185		
1-1/4	1.2500	.500	2.750	C46186	C46187	C46188	-	-		
1-1/2	1.5000	.750	2.875	C46189	C46190	C46191	-	-		
2	2.0000	.750	3.250	-	-	C46192	-	-		

### SET

## Style: 10001, 10003

## Countersink Sets Single flute and 3 flute



no. of pieces	angle	size range	order number	
			10001	10003
5	60°	1/4" through 3/4" x 1/8"	C00970	C00972
5	82°	1/4" through 3/4" x 1/8"	C00971	C00973

Material Reference	Steel (HRc)				Stainless Steel			Cast Iron (HRc)		Aluminum and Non-Ferrous	Hi-Temp Alloy		Hardened Steel (HRc)
	Low Carbon		Alloy		Austenitic	Martensitic	PH	Gray	Nodular		Ni, Co, Fe Based Super Alloy	Titanium	
	Hardness	13-38	>38	16-38	> 38	300 Series	400 series		18-22	22-32			>45
Black Oxide	☆		◆					☆	☆				

☆ = Best Performance    ◆ = Acceptable